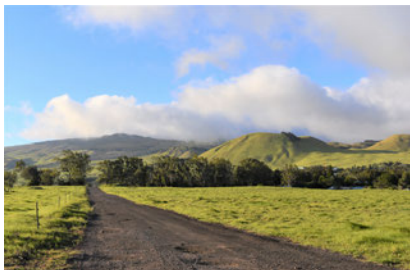


# WAIMEA COUNTRY LODGE

*Aloha!*



## 2022 FACT SHEET

### WAIMEA COUNTRY LODGE | HAWAII ISLAND

Waimea Country Lodge is a rustic 22-room property located in historic Waimea-Kamuela and situated on rolling grasslands framed by scenic mountain views. It offers comfortable, downhome accommodations with small-town charm and warm Hawaiian hospitality. Catering to the value-minded traveler, the farmhouse-style lodge features spacious guest rooms and studios with modern conveniences like daily housekeeping, kitchenettes and high-speed WiFi access.

Upland from the Kohala Coast, Waimea is home to a thriving community of food, arts and local culture. There are a wide variety of restaurants within walking distance of the property in addition to art and antique galleries. Nearby Parker Ranch offers self-guided tours, hunting and horseback riding tours. Visitors can also enjoy nearby golf & Hapuna Beach is a 15-minute drive away.



65-1210 Lindsey Road  
Kamuela, Hawaii 96743  
P: +1 (808) 885-4100  
F: +1 (808) 885-5082  
[www.castleresorts.com](http://www.castleresorts.com)



# WAIMEA COUNTRY LODGE 22 ROOMS AND SUITES | 2 FLOORS

## SERVICES

- Check-in: 3 pm: Check-out: 11 am
- Front desk hours: 9:00 am-4:00 pm
- After hours: Instructions will be given to guests who arrange a late check-in. Guests must call or send an email to: [wcl-res@castleresorts.com](mailto:wcl-res@castleresorts.com) for instructions when booking.
- All major credit cards accepted

## LODGE AMENITIES

- FREE parking
- Ice machine
- Pavilions with grills and seating

## RESTAURANTS & LOUNGES

- FORC restaurant, located on the property.
- Several takeout and delivery choices nearby



## RECREATION & ENTERTAINMENT

- Art and antique galleries nearby
- Golf courses nearby
- Hapuna Beach is 15 minute drive
- Parker Ranch Visitor Center
- Convenient home base for daytrips to North Kohala, Kona, Honokaa and Hilo
- Shopping centers, grocery stores & theater within walking distance
- Saturday's farmers' market is next door, with others just a few minutes away

## ROOM AMENITIES

- Connecting rooms available
- High-speed WIFI access
- Flat-screen TV w/ cable
- Kitchen/Kitchenette units equipped with refrigerator, microwave, oven, smooth-top cooktop, sinkw/ disposal, toaster, rice cooker, coffee maker, cookware, and eating utensils for four
- Shower/tub

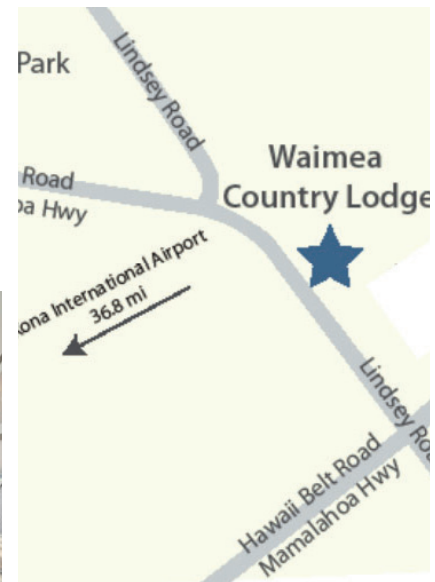


## GDS

- Galileo WV63278
- Sabre WV18224
- Amadeus WVMUEWCL
- Pegasus WVCASWCL
- Worldspan WVWAIME

## DISTANCE FROM

- Kona International Airport - 36.8 mi
- Parker Ranch - 0.5 mi
- Kapaau - 22.8 mi
- Mauna Kea Observatory - 46.2 mi
- Kailua-Kona - 43.4 mi
- Waikoloa Beach Resort - 22 mi
- Hilo International Airport - 59.3 mi
- Volcanoes National Park - 90.1 mi



GUEST ROOMS Category	Type of Bedding*	2022 Published Rates**	Guests	Max Pax	Area ft <sup>2</sup>
Standard Guest Room	2D	\$149-199	1-2	4	312
Superior Mountain View	2D	\$165-215	2	4	312
Deluxe Kitchenette	2Q	\$159-299	1-2	4	380-420
Studio Kitchenette	2K OR 2Q	\$169-309	1-2	4	380-420
Paniolo Suite	1K + 2 SB	\$269-409	1-2	4	700

\* Type of Bedding: K=King Q=Queen, D=Double, SB+Sofa Sleeper - Type of Bedding requests are subject to availability and determined upon arrival.

\*\*Rates vary by season, year-end pricing may apply. Blackout Dates and Minimum nights may apply. Rates are subject to applicable taxes and are subject to change without notice. Area footage is approximate and can vary per unit.

## WORLDWIDE RESERVATIONS

For reservations, please contact our reservations office, your travel consultant, **book online at: [www.castleresorts.com](http://www.castleresorts.com)**, or **via email at: [reservations@castleresorts.com](mailto:reservations@castleresorts.com)**

Worldwide Direct: +1-808-545-3510  
Toll-Free (U.S., Canada, & Saipan): +1-800-367-5004  
Fax: +1-808-545-2163

